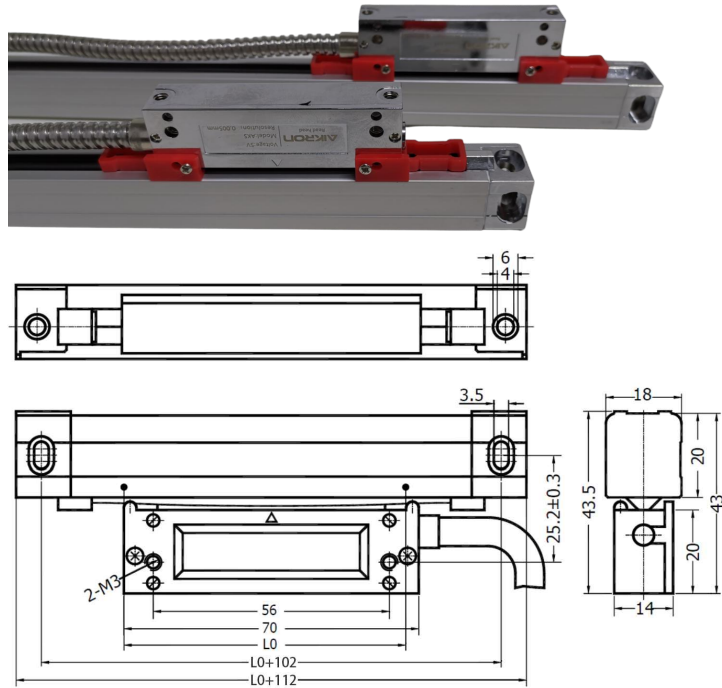


AKS



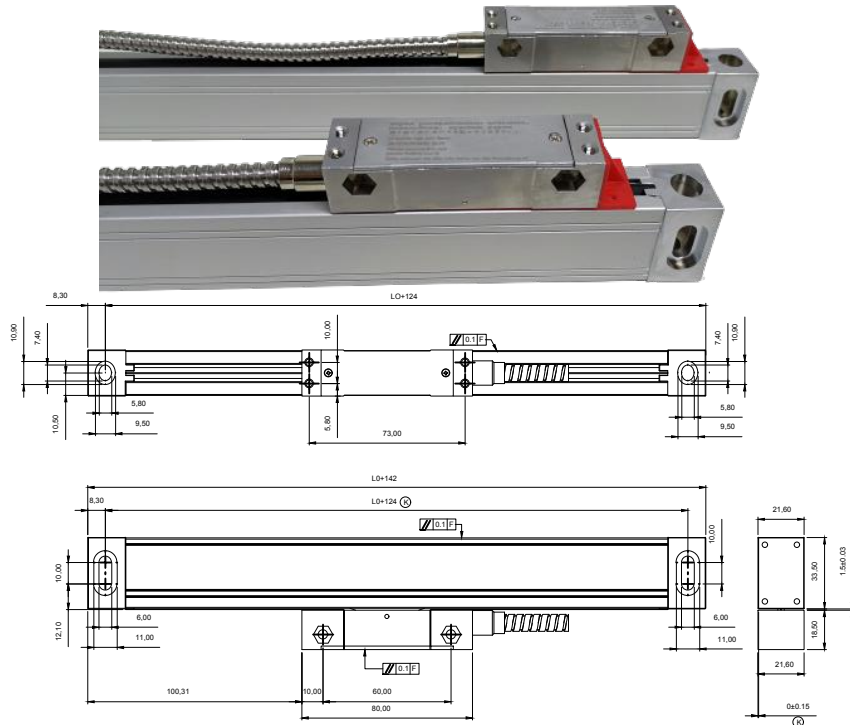
Technical Parameter:

Measuring Range: 50-600mm Resolution: 0.5μm , 1μm , 5μm Grating Pitch: 20μm
 Output Signal: 5V TTL / 5V RS42 Cross Section: 18*20mm Accuracy: ±5μm , ±10μm/M
 Working Temperature: -10°C--60°C Storage Temperature: -20°C--70°C Sealing Protection
 Class: IP54 Maximum Moving Speed: 60M/Min Reference Point: Every 50mm Phase
 Displacement: 90°±10°

Features:

- 45°NSK brand five bearing sliding structure. •
- Silky smoothly movement throughout. •
- Adopting aviation grade aluminum, effectively avoid any scale bending. •
- Full sealing structure, swarf and coolant proof. Super small size, ideal choice for applications which get limited installation space. •

AKM



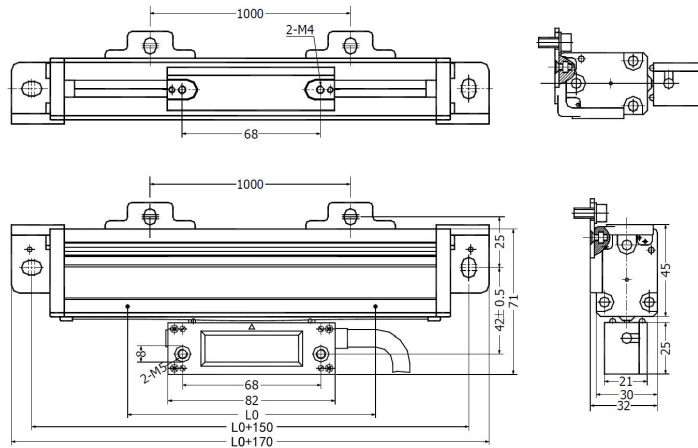
Technical Parameter:

Measuring Range: 50-1100mm Resolution: 0.5 μ m , 1 μ m , 5 μ m Grating Pitch: 20 μ m
Output Signal: 5V TTL / 5V RS42 Cross Section: 21.6*33.5 mm Accuracy: \pm 5 μ m , \pm 10 μ m/
M Working Temperature: -10 $^{\circ}$ C--60 $^{\circ}$ CStorage Temperature: -20 $^{\circ}$ C--70 $^{\circ}$ CSealing
Protection Class: IP54 Maximum Moving Speed: 60M/Min Reference Point:Every 50mm
Phase Displacement: 90 $^{\circ}$ \pm 10 $^{\circ}$

Features:

- 90 $^{\circ}$ NSK brand five bearing sliding structure. •
- Silky smoothly movement throughout. •
- Adopting aviation grade aluminum, effectively avoid any scale bending. •
- Full double sealing structure,swarf and coolant proof. Medium size,ideal choice for most normal applications. •

AKL



Technical Parameter:

Measuring Range: 50-3000 mm Resolution: 0.5μm , 1μm , 5μm Grating Pitch: 20μm
Output Signal: 5V TTL / 5V RS42 Cross Section: 30*45 mm Accuracy: ±5μm , ±10μm/M
Working Temperature: -10°C--60°C Storage Temperature: -20°C--70°C Sealing Protection
Class: IP54 Maximum Moving Speed: 60M/Min Reference Point: Every 50 mm Phase
Displacement: 90°±10°

Features:

45°NSK brand five bearing sliding structure. Silky smoothly movement throughout. Adopting aviation grade aluminum, effectively avoid any scale bending.
 Full sealing structure, swarf and coolant proof. Large size, ideal choice for large machines .

-
-